

Sundance Multiprocessor Technology Limited Design Specification

Form : QCF51
Dated : 23 May 2001
Revision : 5.0
Approved : Mark Ainsworth

Unit / Module Name:	Dual SHB to SHB connector PCB
Unit / Module Number:	SMT596
Used On:	
Document Issue:	1.0
Date:	15 th June 2004

CONFIDENTIAL

Outline Description

The SMT596 is an SHB to SHB connector PCB that eliminates the need for two SHB cables when connecting adjacent TIMs.

Approvals		Date
Managing Director		
Software Manager		
Design Engineer		

Sundance Multiprocessor Technology Ltd, Chiltern House, Waterside, Chesham, Bucks. HP5 1PS.
This documents is the property of Sundance and may not be copied nor communicated to a third party without the written permission of Sundance. © Sundance Multiprocessor Technology Limited 1999



Certificate Number FM 55022

Revision History

	Changes Made	Issue	Initials
15/6/04	First draft.	1.0	GKP

Table of Contents

1	Introduction.....	4
1.1	Related Documents	4
2	PCB Layout Details	4
3	Safety.....	4
4	EMC.....	4
5	Pinout and Package Requirements	5
5.1	SHB pin-out	5

1 Introduction

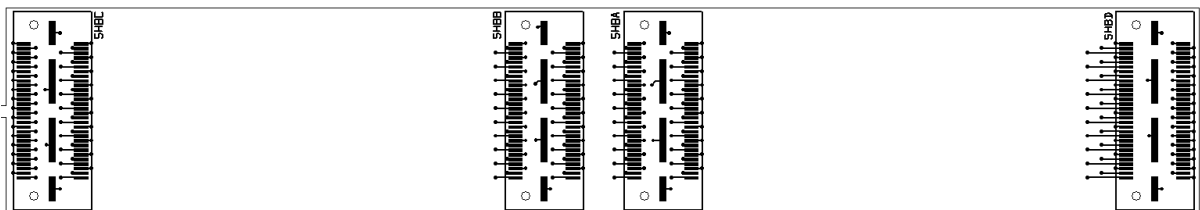
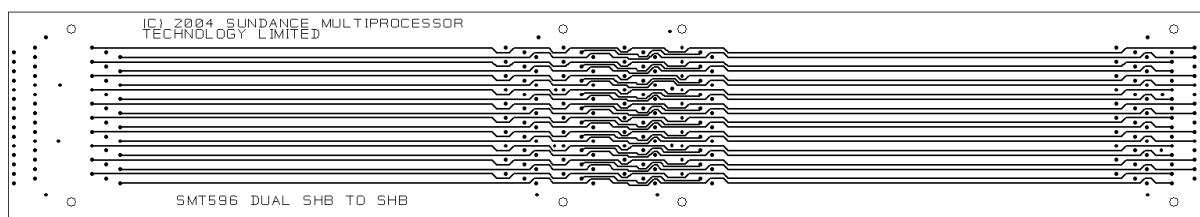
The SMT596 is an SHB to SHB connector PCB that eliminates the need for two SHB cables when connecting adjacent TIMs.

1.1 Related Documents

[Sundance SHB specification.](#)

[TIM40 Specification](#)

2 PCB Layout Details



3 Safety

This module presents no hazard to the user.

4 EMC

This card is designed to operate from within an enclosed host system, which is build to provide EMC shielding. Operation within the EU EMC guidelines is not guaranteed unless it is installed within an adequate host system.

This card is protected from damage by fast voltage transients originating from outside the host system which may be introduced through the output cables.

Short circuiting any output to ground does not cause the host PC system to lock up or reboot.

5 Pinout and Package Requirements

5.1 SHB pin-out

W	Hw	QSH Pin number	QSH Pin number	W	Hw
CLK	CLK	1	2	D0	D0
D1	D1	3	4	D2	D2
D3	D3	5	6	D4	D4
D5	D5	7	8	D6	D6
D7	D7	9	10	D8	D8
D9	D9	11	12	D10	D10
D11	D11	13	14	D12	D12
D13	D13	15	16	D14	D14
D15	D15	17	18		USERDEF0
	USERDEF1	19	20		USERDEF2
	USERDEF3	21	22	WEN	WEN
REQ	REQ	23	24	ACK	ACK
		25	26		
		27	28		
		29	30		
		31	32		
		33	34		
		35	36		
	CLK	37	38	D16	D0
D17	D1	39	40	D18	D2
D19	D3	41	42	D20	D4
D21	D5	43	44	D22	D6
D23	D7	45	46	D24	D8
D25	D9	47	48	D26	D10
D27	D11	49	50	D28	D12
D29	D13	51	52	D30	D14
D31	D15	53	54		USERDEF0
	USERDEF1	55	56		USERDEF2
	USERDEF3	57	58		WEN
	REQ	59	60		ACK

The above table shows the common connections for 16 bit SDB interfaces. Refer to the SHB specification for a full description.

All 60 signals are interconnected between the SMT596's SHB connectors.